

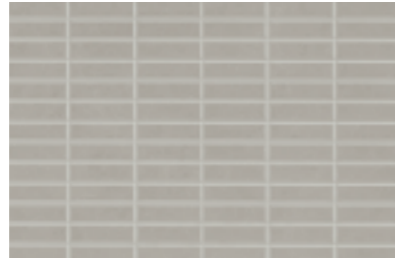
R3TQ Casablanca Grigio 25x38  
R3TR Casablanca Antracite 25x38  
R3VQ Casablanca Mosaico Grigio 25x38  
R3XC Casablanca Decoro Grigio / Antracite 25x38  
R3LE Casablanca Antracite 45x45



**R3XP** Casablanca Bianco  
25x38



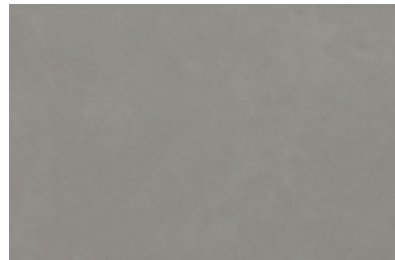
**R3TQ** Casablanca Grigio  
25x38



**R3VQ** Casablanca Mosaico Grigio  
25x38



**R3WZ** Casablanca Decoro Grigio  
25x38



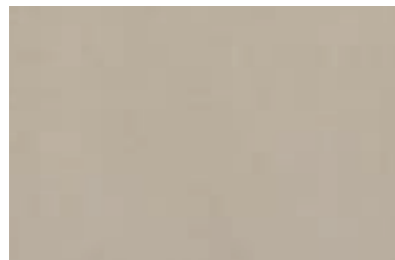
**R3TR** Casablanca Antracite  
25x38



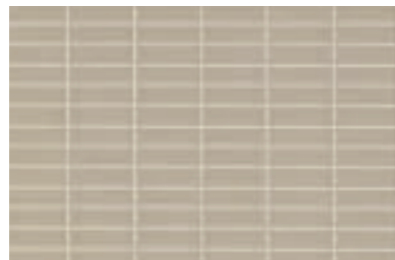
**R3VR** Casablanca Mosaico Antracite  
25x38



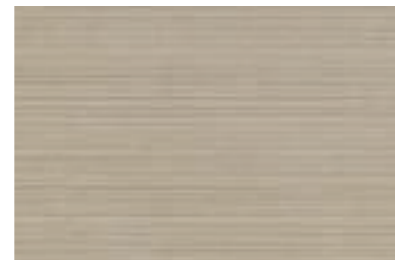
**R3WY** Casablanca Decoro Antracite  
25x38



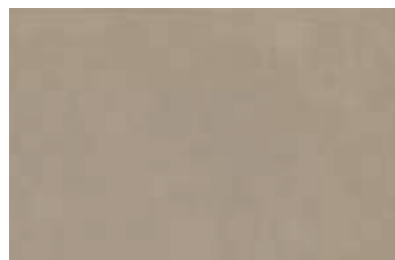
**R3TM** Casablanca Beige  
25x38



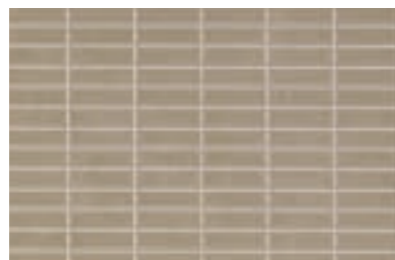
**R3VM** Casablanca Mosaico Beige  
25x38



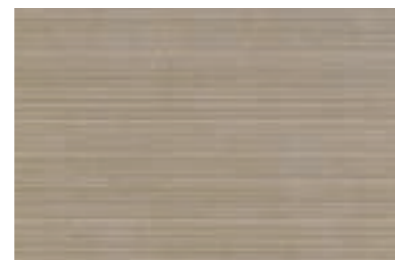
**R3WV** Casablanca Decoro Beige  
25x38



**R3TN** Casablanca Creta  
25x38



**R3VN** Casablanca Mosaico Creta  
25x38



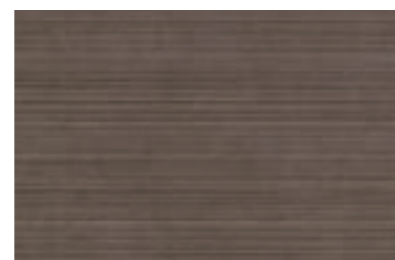
**R3WW** Casablanca Decoro Creta  
25x38



**R3TP** Casablanca Marrone  
25x38



**R3VP** Casablanca Mosaico Marrone  
25x38



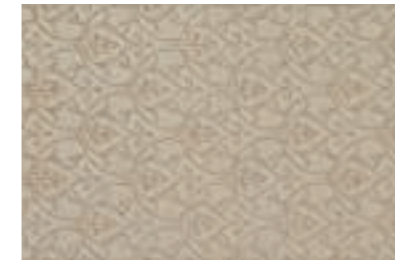
**R3WX** Casablanca Decoro Marrone  
25x38

Abbinabile ai fondi / Matching with colours / Mit den Grundfliesen kombinierbar / Peut s'associer aux carreaux de base de couleurs / Puede combinarse con los fondos / Сочетается с фоновой плиткой:

Beige, Creta, Marrone



**R3XA** Casablanca Decoro Marrone  
25x38



**R3XD** Casablanca Decoro Beige  
25x38



**R3WT** Casablanca L. Beige  
4,5x38

Abbinabile ai fondi / Matching with colours / Mit den Grundfliesen kombinierbar / Peut s'associer aux carreaux de base de couleurs / Puede combinarse con los fondos / Сочетается с фоновой плиткой:

Grigio, Antracite



**R3XC** Casablanca Decoro Antracite  
25x38



**R3WU** Casablanca L. Grigio  
4,5x38

**pavimenti coordinati** / coordinated floor tiles / koordinierte bodenfliesen / sols coordonnés / pavimentos coordinados / координированные полы

CASABLANCA 25x38							
	Bianco	Grigio	Antracite	Beige	Crema	Marrone	
CASABLANCA (pag. 58)							
	GR	AN	GR	AN	BG	CR	MA

#### tech info



Mosaico preinciso da stuccare  
Pre-cut mosaic, requires grouting  
Mit Fugen zu verlegendes, vorgeschchnittenes Mosaik  
Mosaïque pré-coupée à jointoyer  
Mosaico pregrabado que hay que estucar  
Мозаика с насечкой для затирки

#### imballi / packaging / verpackungen / emballages / embalajes / упаковки

Scatole / Box / Karton / Boite / Caja / Коробки



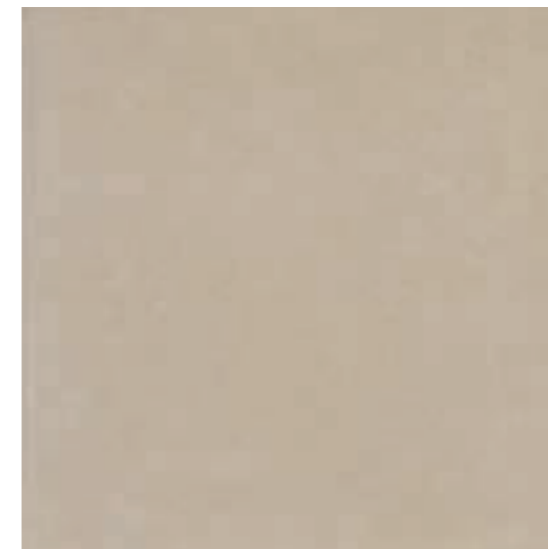
fondi / plain tiles / grundfliesen / fonds / fondos / фоновая плитка							
25x38	14	1,33	19,40	54	71,82	1047,86	8,5
25x38 mosaico	14	1,33	19,40	54	71,82	1047,86	8,5
decori / decorative pieces / dekore / décors / decoraciones / декоры							
25x38 decoro	14	1,33	19,40	54	71,82	1047,86	8,5
25x38 dec. R3XA/R3XC/R3XD	4	0,38	5,48				
4,5x38 L.	6	0,10	1,48				

# Casablanca

60x60 30x60 45x45 33,3x33,3



R3KM Casablanca BG rettificato 60x60

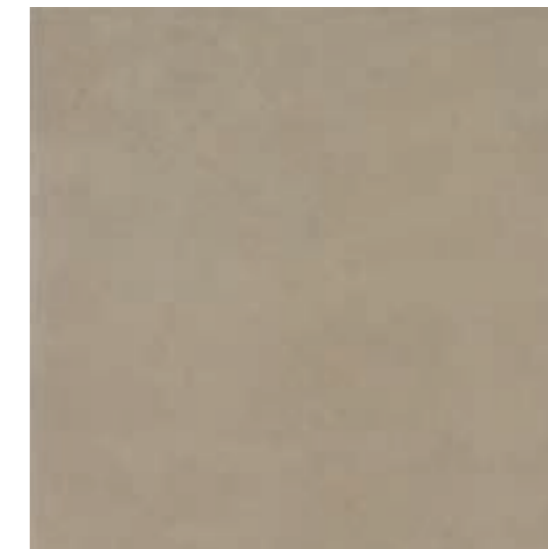


G

**R3KM** Casablanca BG rettificato  
60x60

**R3KZ** Casablanca BG  
45x45

**R51P** Casablanca BG  
33,3x33,3

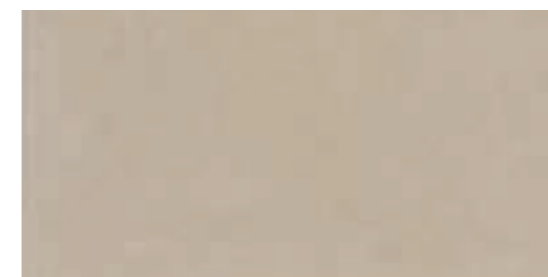


G

**R3KN** Casablanca CR rettificato  
60x60

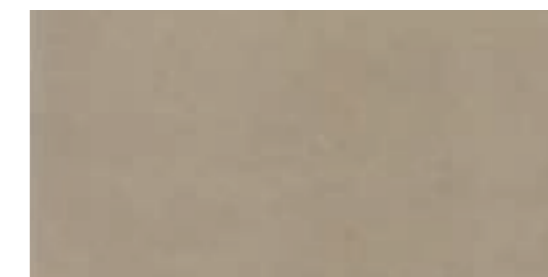
**R3LA** Casablanca CR  
45x45

**R51Q** Casablanca CR  
33,3x33,3



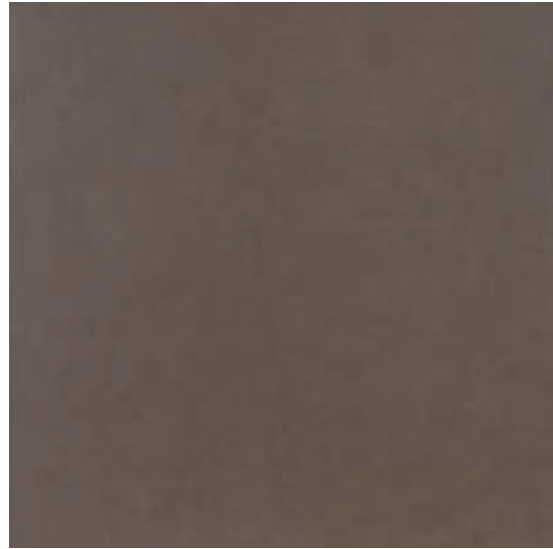
G

**R3KT** Casablanca BG rettificato  
30x60



G

**R3KU** Casablanca CR rettificato  
30x60



F

**R3KP** Casablanca MA rettificato  
60x60

**R3LC** Casablanca MA  
45x45

**R51R** Casablanca MA  
33,3x33,3

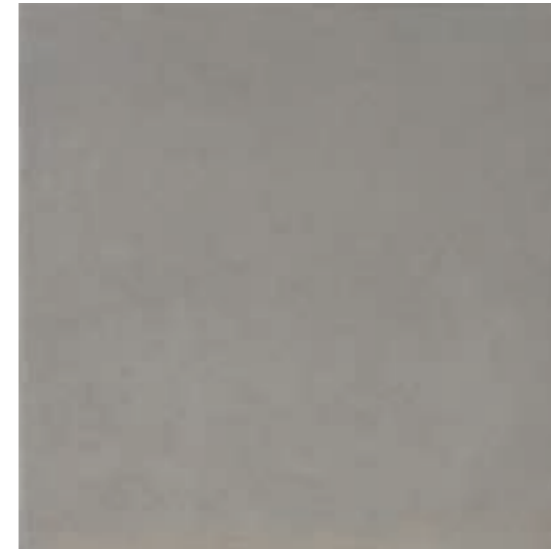


G

**R3KQ** Casablanca GR rettificato  
60x60

**R3LD** Casablanca GR  
45x45

**R51S** Casablanca GR  
33,3x33,3



G

**R3KR** Casablanca AN rettificato  
60x60

**R3LE** Casablanca AN  
45x45

**R51T** Casablanca AN  
33,3x33,3

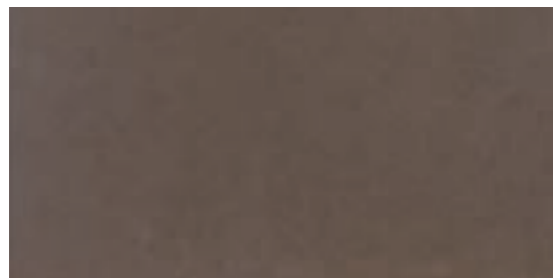


F

**R3KS** Casablanca NE rettificato  
60x60

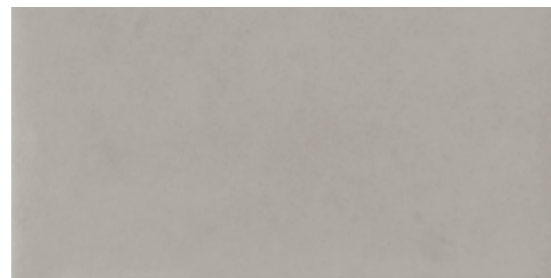
**R3LF** Casablanca NE  
45x45

**R51U** Casablanca NE  
33,3x33,3



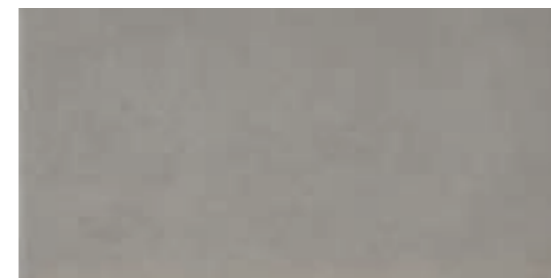
F

**R3KV** Casablanca MA rettificato  
30x60



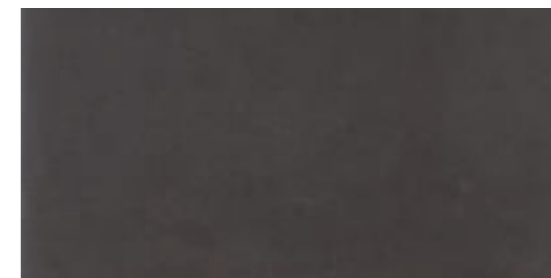
G

**R3KW** Casablanca GR rettificato  
30x60



G

**R3KX** Casablanca AN rettificato  
30x60



F

**R3KY** Casablanca NE rettificato  
30x60

tech info

\*  
Battiscopa ottenuto per pressatura  
Pressed skirting tile  
Gepresster Sockel  
Plinthe obtenue par pressage  
Rodapié obtenido mediante prensado  
Глинтус, полученный в результате прессовки



Vedi Appendice pag. 114  
See Appendix page 114  
Siehe Anhang S. 114  
Voir Annexe page 114  
Véase la pág. 114 del Apéndice  
Смотри приложение на стр. 114

pezzi speciali / trims / spezialteile / pièces spéciales / piezas especiales / специальные изделия



Casablanca BG	R3LN	R53X	R3LG
Casablanca CR	R3LP	R53Y	R3LH
Casablanca MA	R3LQ	R53Z	R3LJ
Casablanca GR	R3LR	R544	R3LK
Casablanca AN	R3LS	R548	R3LL
Casablanca NE	R3LT	R549	R3LM

imballi / packaging / verpackungen / emballages / embalajes / упаковки

	Scatole / Box / Karton / Boite / Caja / Коробки			Pallet / Pallet / Palette / Palette / Поддон		
	M <sup>2</sup>	KG		M <sup>2</sup>	KG	≠ mm

fondi / plain tiles / grundfliesen / fonds / fondos / фоновая плитка						
60x60	3	1,08	23,00	40	43,20	920,00
30x60	6	1,08	19,55	48	51,84	938,45
45x45	5	1,01	19,58	33	33,41	646,27
33,3x33,3	16	1,77	29,71	38	67,42	1129,14

pezzi speciali / trims / spezialteile / pièces spéciales / piezas especiales / специальные изделия						
7,5x60	BT.B.C.	16	9,60 ml	16,00		8,5
8x33,3	BT.B.C.	50	16,65 ml	19,59		8,3
8x45	BT.B.C.	30	13,50 ml	18,54		8,3